



PCR–RFLP of isolated *Salmonella* from poultry with Sau3AI and HhaI restriction endonucleases in Arak

Pejvak Khaki (Ph.D); Soheila Moradi Bidhendi (Ph.D)*; Elham Ezatpanah (Ph.D)

Microbiology Department, Razi Vaccine and Serum Research Institute, karaj- Iran

ARTICLE INFO

Article history:

Received: 12 March 2013

Accepted: 30 April

Available online: 1 June 2013

Keywords:

Salmonella, Avian, *fliC* gene,
PCR-RFLP, HhaI, Sau3AI, Arak.

ABSTRACT

Salmonella enterica is considered as one of the major pathogens in public health, worldwide. Diseases caused by *Salmonella enterica* serovars are especially prevalent in developing countries. It is one of the emerging pathogen in food-borne diseases, which is often found in contaminated chicken eggs. The aim of this study was to apply a PCR–RFLP method using Sau3AI and HhaI restriction endonucleases on the *fliC* gene to identify the serotypes of *Salmonella* isolates in avian living in Arak area in central Iran. Serotypes of 75 isolates included *Salmonella enteritidis* (45.33%), *Salmonella infantis* (44%), *Salmonella typhimurium* (5.33%), *Salmonella bardo* (2.67%) and *Salmonella bacong* (2.67%). All the isolates showed *fliC* gene (1500bp) by using specific primers. The results of PCR-RFLP with restriction enzymes HhaI and Sau3AI for gene *fliC* showed 4 and 5 patterns. It was observed that Sau3AI is able to discriminate all serotypes of *Salmonella* but HhaI could not distinguish *Salmonella infantis* and *Salmonella typhimurium*. The prevalent *Salmonella* isolated in this study belonged to serotype enteritidis and infantis. The combination of the data obtained with both restriction enzymes could differentiate the serovars completely. These results showed that *fliC* gene is a suitable target gene for discriminating among these *Salmonella* serotypes by PCR-RFLP.

1. Introduction

Nontyphoidal *salmonella* (NTS) are of the major cause of food-borne illness and commonly cause self-limiting gastroenteritis, worldwide (Hendriksen et al., 2011). The ubiquitous *Salmonella enteritidis*, which affects both humans and animals, is one of the most commonly reported NTS serovars. In developing countries, NTS frequently cause severe illness, invasive infections and even death, especially among young children with underlying diseases or HIV infected immunocompromised adults (Graham 2010; Hohmann 2001). *Salmonella* causes a serious health problem in developing countries through a wide range of human diseases (Zaki et al., 2009). The most common sources of *Salmonella* include beef, poultry, eggs, dairy

products and vegetables. Fruits and shellfish have also been implicated as sources of *Salmonella* (Uzzau et al., 2000).

The identification of *Salmonella* isolates into specific serovars is essential for epidemiologic studies and tracing the source of outbreaks (Hong et al., 2003). However, production and quality control of hundreds of antisera required for serotyping are laborious and time-consuming. To circumvent the problems, many genotyping techniques, including pulsed-field gel electrophoresis (PFGE), random amplified polymorphic DNA (RAPD), Restriction Fragment Length Polymorphism (RFLP) and Multiplex PCR have been applied as alternative methods for *Salmonella* subtyping (Chansiripornchai et al., 2000; Gallegos-Robles et al., 2008; Luk et al., 1993). PCR is a rapid and

*Corresponding author: Dr. Soheila Moradi Bidhendi

Tel: +982634570038 Fax: +2634552194

E mail: s.bidhendi@rvsri.ac.ir

specific method for detection of bacterial pathogens and biochemical methods have been complemented by DNA-based molecular techniques. The RFLP system is inexpensive and easy to perform but requires a unique set of restriction sites to be present in the amplicon of interest (Kwon *et al.*, 2000). The method is rapid, simple, and reproducible and can potentially be applied for identification of isolates obtained from other production systems too (Gallegos-Robles *et al.*, 2008). In *Salmonella*, flagella are a 55 kDa monomeric protein encoded by *fliC* and *fliB* genes that assemble to form the filament structure of the flagellar apparatus necessary for bacterial motility (Zeng *et al.*, 2003).

The amino and carboxyl termini of flagellin are quite conserved, not only between *fliC* and *fliB*, but also in flagellins from different serotypes. In contrast, the central portion of the protein is hyper variable and contains most of the antigenic residues (Ciacci-Woolwine *et al.*, 1998; McQuiston *et al.*, 2004). The *fliC* gene has a conserved terminal region and a variable central region, which determines the antigenic specificity. For this, the *fliC* gene has been used as a target gene in assay to test the genetic diversity among *Salmonella* (Dauga *et al.*, 1998). The aim of this study was to apply PCR-RFLP method based on the *fliC* gene to identify *salmonella* serotypes that isolated from poultry in Arak by using restriction endonucleases *HhaI* and *Sau3AI*.

2. Materials and Methods

2.1. *Salmonella* isolates

A total of 75 *salmonella* isolates derived from poultry specimens sourced from various farms located in Arak areas in Central Iran, were obtained from Razi Type Culture Collection (RTCC), Karaj, Iran (Ezatpanah *et al.*, 2013). *Salmonella enteritidis* (ATCC 13076), *Salmonella typhimurium* (ATCC 14028) and *Citrobacter freundii* (ATCC43864) were used as positive and negative controls in PCR-RFLP.

2.2. *Salmonella* DNA Preparation

Salmonella DNA was extracted by a simple method as described by Ghaderi *et al.*, 2013. Briefly a loopful of overnight culture on nutrient agar plates was placed in 0.5 ml of TE buffer and vortexed. The

bacterial suspension was heat-inactivated at 90°C for 10 min and centrifuged at 11000 rpm for 4 min. A small portion (1/64 v/v) of a 10 mg/ml proteinase K solution (Roche, Germany) was added to the supernatant and this mixture was directly used for PCR-RFLP.

2.3. PCR primers

The primers used to amplify phase-1 flagellin gene were AAGTCATTAATACMAACAGCC (Fsa-F) and TTAACGCAGTAAAGAGAGAC (Fsa-R) (Dauga *et al.*, 1998).

2.4. PCR amplification of the *fliC* gene

PCR was conducted in a volume of 25 µl containing 2 µl of genomic DNA from the *salmonella* isolates, 12.5 µl mastermix, 2 µl of primers specific for *fliC* gene and 8.5 µl of deionized distilled water (D.D.W). Amplification was performed in a thermal cycler (Eppendorf) programmed as follows: initial denaturation 94°C for 5 min, 35 cycles consisting of 1 min at 94°C, 1 min at 55°C, 35 s at 72°C and a final extension step of 1 min at 72°C. Amplified products were electrophoresed on 0.8% agarose gel. Following electrophoresis, the gel was stained in ethidium bromide and photographed under ultraviolet (UV) light. A 100 bp DNA ladder (Fermentase) was used as a marker for determining the molecular weight of PCR products (Nair *et al.*, 2002).

2.4. RFLP analysis

Digestion solution was prepared with 20µl of the PCR product, 3µl of either *HhaI* or *Sau3AI* buffer 10x, 1.5µl of either *HhaI* or *Sau3AI* enzyme, and 5.5µl of D.D.W. After incubation at 37°C for 16h, RFLP were determined by electrophoresis of the digested DNA in 2.5% agarose gel for 4h at 50V. Size of the products was analyzed in comparison to the 100 bp plus DNA Ladder (Fermentase).

3. Result

3.1. *Salmonella* isolates

A total of 75 *Salmonella*, identified by biochemical tests and serotyped with specific antisera, included *Salmonella enteritidis* (45.33%),

Salmonella infantis (44%), *Salmonella typhimurium* (5.33%), *Salmonella bacongo* (2.67%), and *Salmonella bardo* (2.67%).

3.2 PCR amplification of the *fliC* gene

An approximately 1.5 kbp fragment was amplified from 75 isolates of *Salmonella*. As expected, all serotypes of *Salmonella* produced the respective band on the agarose gel (Figure 1).

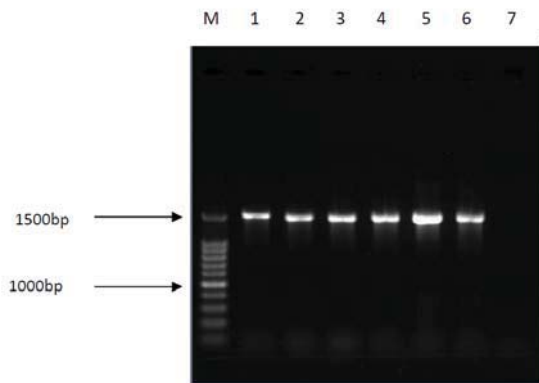


Figure 1. Electrophoresis of *fliC* gene amplicons from *Salmonella* isolates. M: Molecular marker 100bp DNA ladder (Fermentas); lane 1 (*Salmonella enteritidis* ATCC13076), lane 2 (*Salmonella enteritidis*), lane 3 (*Salmonella infantis*), lane 4 (*Salmonella typhimurium*), lane 5 (*Salmonella bacongo*), lane 6 (*Salmonella bardo*), lane 7 Negative control *Citrobacter freundii* (ATCC43864).

3.3 RFLP analysis of *fliC* gene by *HhaI*

The results of PCR-RFLP with restriction enzyme *HhaI* for gene *fliC* showed 4 patterns between 75 isolated *Salmonella*. It was observed that *HhaI* is able to discriminate isolates including *Salmonella enteritidis* (bands: 110-810 bp), *Salmonella infantis* (bands: 110-790 bp), *Salmonella typhimurium* (bands: 110-790 bp), *Salmonella bacongo* (bands: 110-750 bp) and *Salmonella bardo* (bands: 110-320 bp). However, *Salmonella infantis* and *Salmonella typhimurium* produced the same band patterns (110-790 bp), as shown in Figure 2 and Table 1.

3.4 RFLP analysis of *fliC* gene by *Sau3AI*

The results of PCR-RFLP with *Sau3AI* on *fliC* showed 5 patterns among the isolates. It was observed that *Sau3AI* is able to discriminate isolates including *Salmonella enteritidis* (bands: 110-850 bp), *Salmonella infantis* (bands: 190-880 bp),

Salmonella typhimurium (bands: 330-1100 bp), *Salmonella bacongo* (bands: 110-900 bp) and *Salmonella bardo* (bands: 530-1100 bp). This restriction enzyme was able to differentiate all serotypes as each produced a different RFLP pattern (Figure 3).

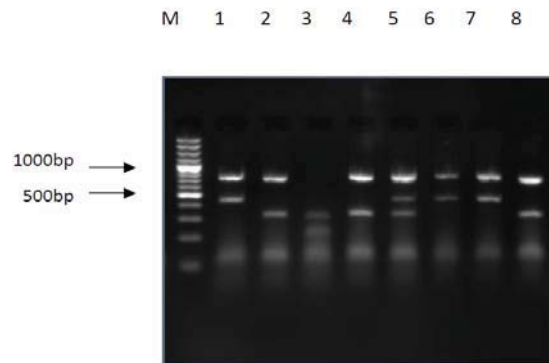


Figure 2. PCR-RFLP profiles of *fliC* gene with *HhaI* restriction endonuclease. M: Molecular Weight Marker DNA Ladder (plus); Lane 1, *Salmonella enteritidis*, Lane 2, *Salmonella infantis*, Lane 3, *Salmonella bardo*, Lane 4, *Salmonella typhimurium*, Lane 5, *Salmonella bacongo*, Lane 6, *Salmonella enteritidis*, Lane 7, *Salmonella enteritidis* (ATCC 13076), Lane 8, *Salmonella typhimurium* (ATCC 14028).

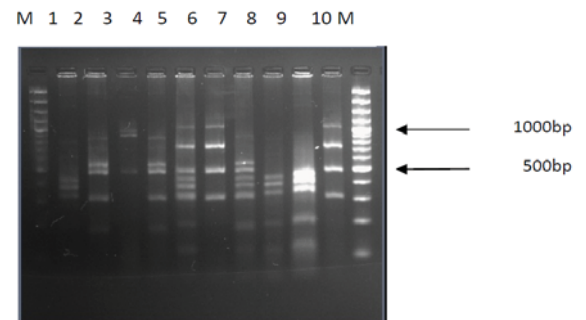


Figure 3. PCR-RFLP profiles of *fliC* gene with *Sau3AI* restriction endonuclease. M: Molecular Weight Marker DNA Ladder (plus); Lane 1, *Salmonella enteritidis*, Lane 2, *Salmonella infantis*, Lane 3, *Salmonella bardo*, Lane 4, *Salmonella infantis*, Lane 5, *Salmonella* sp., Lane 6, *Salmonella typhimurium*, Lane 7, *Salmonella bacongo*, Lane 8, *Salmonella enteritidis*, Lane 9 *Salmonella enteritidis* (ATCC 13076), Lane 10, *Salmonella typhimurium* (ATCC 14028).

4. Discussion

Salmonellosis is one of the major public health problems. Strains of *Salmonella* are considered as important pathogens and a leading cause of bacterial food-borne illness. Since genomic variations play an important role in bacterial identification, it is

Table 1. PCR-RFLP profiles of *Salmonella fliC* gene digested with *Sau3AI* and *HhaI* restriction enzymes

<i>Salmonella enterica</i> serotypes	<i>fliC</i> PCR- RFLP bands (<i>HhaI</i>)	<i>fliC</i> PCR- RFLP bands (<i>Sau3AI</i>)
<i>Salmonella enteritidis</i>	110-480-810	110-200-340-390-450-850
<i>Salmonella infantis</i>	110-350-790	190-320-490-550-880
<i>Salmonella typhimurium</i>	110-350-790	330-520-790-1100
<i>Salmonella bacongo</i>	110-350-450-750	110-190-340-400-450-530-590-900
<i>Salmonella bardo</i>	110-230-320	530-1050-1100

necessary to use molecular techniques capable of detecting genetic variation to identify different species of bacteria (Akbarmehr et al., 2010). Antigenic polymorphism of flagella seems to have been generated by the accumulation of ordinary genetic events in flagellin genes, such as point mutations, deletion and insertions (Dilmaghani et al., 2010).

In a study, PCR-RFLP method based on the *fliC* gene was used to determine 55 serotypes of *Salmonella* in Mexico with the restriction enzyme *Sau3AI*. The results showed that 91% and 9% of the isolates matched with the *Salmonella typhimurium* and *Salmonella enteritidis* reference strain restriction profiles. PCR-RFLP analyses with *Sau3AI* demonstrated that *fliC* is a suitable target gene for discriminating among *Salmonella* serotypes by PCR-RFLP. Researchers showed that this method is rapid, simple, and reproducible and can potentially be applied for identification of isolates (Gallegos-Robles et al., 2008). In our study, 75 isolates from poultry that belongs to 5 serotypes were investigated by PCR-RFLP. The *fliC* gene was able to differentiate *Salmonella enteritidis*, *Salmonella typhimurium*, *Salmonella bacongo*, *Salmonella bardo* and *Salmonella infantis*. These results showed that this method can potentially be applied for identification of these serotypes.

Akbarmehr et al., (2010) isolated 58 *Salmonella* strains from poultry. They evaluated hsp *groEL* gene diversity by PCR-RFLP analysis using *HaeIII* restriction enzyme. They showed that there were differences in the *HaeIII* restriction sites within the *groEL* gene of strains belonging to serovars *Salmonella typhimurium* and *Salmonella enteritidis*; however, clear discrimination between the serovars of other *Salmonella* serogroups was not observed. Their results showed that *groEL* lacked the ability to discriminate between *Salmonella* serovars, while the results obtained by our study shows that PCR-

RFLP on *fliC* gene using *Sau3AI* restriction enzyme is able to differentiate *Salmonella* serovars.

Dilmaghani et al., (2010) identified the polymorphism of *fliB* gene among avian in different regions by PCR-RFLP method. Two RFLP patterns obtained. Pattern A was observed in 33 (63.46%) and pattern B in 19 (36.54%) of isolates. *Salmonella typhimurium* recovered from 13 broilers and 8 sparrow showed both A and B patterns. Our study showed 5 different serotypes of *Salmonella*, and PCR-RFLP method on *fliC* gene showed 4 and 5 different patterns using *HhaI* and *Sau3AI*, respectively.

Hong et al., (2003) studied on 52 serotypes of *Salmonella* spp. The phase 1 (*fliC*) and phase 2 (*fliB*) *Salmonella* flagella genes were analyzed by RFLP-PCR to aid in identification of different *Salmonella* serotypes with restriction endonucleases *Sau3AI* and *HhaI*. Ninety percent of the *Salmonella* serotypes were identified by the restriction enzyme RFLP analysis of *fliC* and *fliB* genes. They concluded that PCR-RFLP could be a fast, accurate, and economical alternative approach for serotyping of *Salmonella* spp. Our serotyping results showed that PCR-RFLP technique was able to differentiate all serovars of *Salmonella* in this study.

Dauga et al., (1998) and Hong et al., (2003) found good discriminatory ability with the *fliC* and *fliB* genes, particularly using double digestion with either *HhaI*/ *HphI* or *Sau3AI*/*HhaI* endonucleases. Similarly in our study, double digestion with endonucleases *HhaI* and *Sau3AI* was used. These 2 enzymes were able to differentiate all serotypes of isolated *Salmonella*.

Forty-seven *Salmonella* isolates of 20 different serovars, derived from chicken samples in Thailand, were studied by PCR-RFLP assay using *MboI* and *HhaI* restriction endonucleases on *fliC/fliB* genes by Jong et al., (2010). The *fliC* showed 11 and 9 patterns, while the *fliB* showed 6 and 7 patterns. They demonstrated that PCR-RFLP was not able to

differentiate *Salmonella hadar*, *Salmonella virchow*, *Salmonella emek* and *Salmonella albany*. Therefore, they concluded that PCR-RFLP test could not replace by serotyping. They showed that this assay was reproducible and successfully applied to simply screen *Salmonella* serovars as an alternative subtyping test for rapid traceability of *Salmonella* contamination in chicken production. According to our research this method can be considered as an alternative typing along with serotyping.

Sumithra *et al.*, (2013) used RFLP to analysis of typing, heterogeneity, typeability and polymorphism of the 16S rRNA, *fliC* and *fimH* genes in *Salmonella typhimurium* isolates from different origin. Their results demonstrated that PCR-RFLP of these genes had good typeability but low discriminatory power. Based on the results obtained by Matsui *et al.*, (2001) and Sumithra *et al.*, (2013), PCR-RFLP with more than one endonuclease and genes give good typeability and increase the differentiating power.

Serotyping of our isolates showed 5 different serotypes of *Salmonella*. Based on our results, PCR-RFLP using *Sau3AI* was able to differentiate all 5 serotypes but using *HhaI* was unable to differentiate between *Salmonella infantis* and *Salmonella typhimurium*. Our data and other research in this field emphasized that PCR-RFLP by using *Sau3AI* could differentiate *Salmonella enteritidis* and *Salmonella typhimurium*. Serotyping is laborious, expensive and time-consuming but it must be done with molecular techniques. Also more studies need to be performed examining a large number of *Salmonella* serotypes.

Acknowledgement

The authors thank all members of Microbiology department of Razi Vaccine & Serum Research Institute, Karaj, Iran for assistance in this study.

Grant support

This work was fully financed with the state funds from Razi Vaccine and Serum Research Institute, under grant no. 12-18- 18-8901-89003.

Conflict of interest

The authors declare that they have no conflict of interest.

Financial Disclosure

Authors have no relevant financial interests related to the materials in the manuscript.

Authors' Contribution

Soheila Moradi Bidhendi developed the original idea and the protocol, abstracted and analyzed the data, revised the manuscript, and was the sponsor. Pejvak Khaki was the advisor and helped to design the protocol. Elham Ezatpanah performed the experiments.

References

- Akbarmehr, J., Zahraei Salehi, T., Nikbakht Brujeni, G.H., 2010. Identification of *Salmonella* isolated from poultry by MPCR technique and evaluation of their hsp groEL gene diversity based on the PCR-RFLP analysis. *African J Microbiol Res.* 4, 1594-98.
- Chansiripornchai, N., Ramasoota, P., Bangtrakulnonth, A., Sasipreeyajan, J., Svenson, S.B., 2000. Application of randomly amplified polymorphic DNA (RAPD) analysis for typing avian *Salmonella enterica* subsp. *enterica*. *FEMS Immune Med Microbiol.* 29, 221-225.
- Ciacci-Woolwine, F., Blomfield, I.C., Richardson, S.H., Mizel, S.B., 1998. *Salmonella* flagellin induces tumor necrosis factor alpha in a human promonocytic cell line. *Infect Immun.* 66, 1127-1134.
- Dauga, C., Zabrovskaja, A., Grimont, P.A.D., 1998. Restriction fragment length polymorphism analysis of some flagellin genes of *Salmonella enterica*. *J Clin Microbiol.* 36, 2835-2843.
- Dilmaghani, M., Ahmadi, M., Zahraei Salehi, T., Talebi, A., DarvishZadeh, R., 2010. PCR-Restriction Fragment Length Polymorphism analysis of *fljB* gene in *Salmonella enterica* subspecies *enterica* serovar *Typhimurium* isolated from avians. *Iranian J Microbiol.* 2, 178-184.
- Ezatpanah, E., Moradi Bidhendi, S., Khaki, P., Ghaderi, R., Seyedan Jasbi, E., Moghtadaee Far, S., 2013. Isolation, serotyping and antibiotic-resistance pattern of isolated *Salmonella* from chicken of Arak. *Iranian Vet J.* 9, 88-96.
- Gallegos-Robles, M.A., Morales-Loredo, A., Alvarez-Ojeda, G., Vega-P, A., Chew-M, Y., Velarde, S., Fratamico, A., 2008. Identification of *Salmonella* Serotypes isolated from cantaloupe and chile pepper production systems in Mexico by PCR-Restriction Fragment Length Polymorphism. *J Food Protect.* 71, 2217-2222.
- Ghaderi, R., Tadayon, K., Avagyan, S., Khaki, P., Moradi Bidhendi, S., Forbes, K.J., Mosavari, N., Toroghi, M.R., Moosakhani, F., Banihashemi, R., Sekhavati, M., Karimnasab, N., 2013. The population structure of *Salmonella enterica* Enteritidis in Iran analyzed by multiple-locus variable-number tandem repeat analysis. *Trop Anim Health Product.* 45, 889-894.
- Graham, S.M., 2010. Nontyphoidal salmonellosis in Africa. *Curr Opin Infect Dis.* 23, 409-414.
- Hendriksen, R.S., Vieira, A.R., Karlsmose, S., Lo Fo Wong, D.M.A., Jensen, A.B., Wegener, H.C., Aarestrup, F.M., 2011. Global monitoring of *Salmonella* serovar distribution

- from the World Health Organization Global Food-borne Infections Network Country Data Bank: results of quality assured laboratories from 2001 to 2007. *Food-borne Pathol Dis.* 8, 887-900.
- Hohmann, E.L., 2001. Nontyphoidal salmonellosis. *Clin Infect Dis.* 32, 263-269.
- Hong, Y., Liu, T., Hofacre, C., Maier, M., White, D.G., Ayers, S., Wang, L., Maurer, J.J., 2003. A restriction fragment length polymorphism based polymerase chain reaction as an alternative to serotyping for identifying *Salmonella* serotypes. *Avian Dis.* 47, 387-395.
- Jong, H.Y., Pak, T.S., Pannatee, S., Worawidh, W., Thavajchai, S., Patamaporn, A., 2010. PCR-based Restriction Fragment Length Polymorphism for Subtyping of *Salmonella* from Chicken Isolates. *Kasetsart Journal : Nat Sci.* 44, 79 – 83.
- Kwon, H.J., Park, K.Y., Yoo, S.H., Park, J.Y., Park, Y.H., Kim, S.J., 2000. Differentiation of *Salmonella enterica* serotype gallinarum biotype pullorum from biotype gallinarum by analysis of phase 1 flagellin gene *fliC*. *J Microbiol Methods.* 40, 33-38.
- Luk, J.M., Kongmuang, U., Reeves, P.R., Lindberg, A.A., 1993. Selective amplification of *abeQ* and *parA* genes (*rfb*) by polymerase chain reaction for identification of *Salmonella* major serogroups (A, B, C2, and D). *J Clin Microbiol.* 31, 2118-2123.
- Matsui, T., Matsuda, M., Murayama, O., Millar, B.C., Moore, J.E., 2001. *RecA* genotyping of *Salmonella enteritidis* phage type 4 isolates by restriction fragment length polymorphism analysis. *Lett Appl Microbiol.* 32, 424-427.
- McQuiston, J.R., Parrenas, R., Ortiz-Rivera, M., Gheesling, L., Brenner, F., Fields, P.I., 2004. Sequencing and comparative analysis of flagellin genes *fliC*, *fliB*, and *flpA* from *Salmonella*. *J Clin Microbiol.* 42, 1923-1932.
- Nair, S., Lin, T.K., Pang, T., Althwegg, M., 2002. Characterization of *Salmonella* serovars by PCR-single-strand conformation polymorphism analysis. *J Clin Microbiol.* 40, 2346-2351.
- Sumithra, T.G., Chaturvedi, V.K., Gupta, P.K., Rai, A., Chougule, S., Joseph, B., Cherian, S., Patel, C.L., 2014. PCR-RFLP analysis of *fliC*, *fimH* and 16S rRNA genes in *Salmonella typhimurium* isolates of varied origin. *Annals Microbiol.* 64, 177-183.
- Uzzau, S., Brown, D.J., Wallis, T., Rubino, S., Leori, G., Bernard, S., Casadesus, J., Platt, D.J., Olsen, J.E., 2000. Host adapted serotypes of *Salmonella enterica*. *Epidemiol Infect.* 125, 229-255.
- Yoshida, T., Maeda, S., Deguchi, T., Miyazawa, T., Ishiko, H., 2003. Rapid detection of *Mycoplasma genitalium*, *Mycoplasma hominis*, *Ureaplasma parvum*, and *Ureaplasma urealyticum* organisms in genitourinary samples by PCR-microtiter plate hybridization assay. *J Clin Microbiol.* 41(5):1850-5.
- Zaki, S., Haleem, D.A., Helow, E.E., Mustafa, M., 2009. Molecular and biochemical diagnosis of *Salmonella* in wastewater. *J Appl Sci Environ.* 13, 83 – 92.
- Zeng, H., Carlson, A.Q., Guo, Y., Yu, Y., Collier-Hyams, L.S., Madara, J.L., Gewirtz, A.T., Neish, A.S., 2003. Flagellin is the major proinflammatory determinant of enteropathogenic *Salmonella*. *J Immunol.* 171, 3668-3674.